

Who's on First and Why

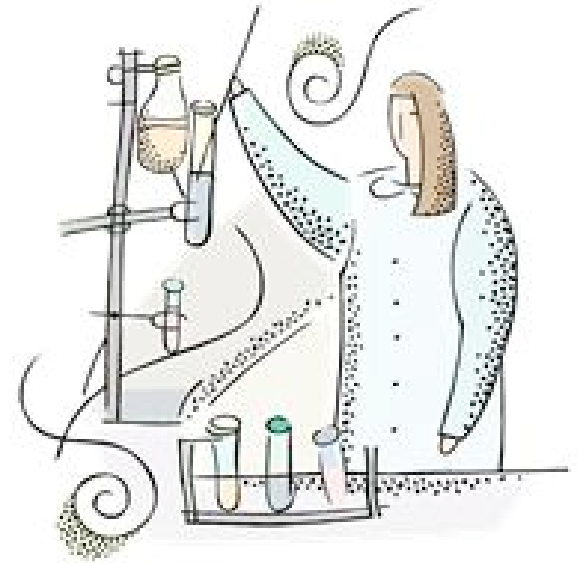
# 648 Eligible Providers from



# Who participated?



# Research



# Questions to Consider

- Why did your organization choose to participate?
- How did leadership support participation?
- What was the level of leadership support?
- How did participation in the research help address a key organizational problem?
- How did the organization know that participation in the research project had the intended effect?
- How can an organization ensure that QI succeeds not fails?

# NIATx200 Intervention Periods

- Months 1 to 5: Wait Time Intervention
- Months 6 to 11: Continuation Intervention
- Months 12 to 17: Admission Intervention

# NIATx200: Participation

- Interest circle calls, maximum 18 agency hours
- Coaching, maximum 24 agency hours
- Learning sessions, maximum 36 agency hours
- Combination arm, maximum 78 agency hours
- Classified participation as
  - three-part variable (low/medium/high), and
  - a binary variable ( low and medium/high).

# Organizational Attributes

- Structural variables (e.g., ownership accreditation, size, location)
- Client characteristics
- Management practices
- Climate and willingness to change

# Results: Wait Time Participation

- Hospital Based (-)
- Executive Sponsor provided very clear aims for the project (-)
- Leaders spent their time and resources to removed obstacles as they arose (+)
- Opinion leader disliked the initial process (-)

# Results: Continuation Participation

- Private (+)
- If successful, the project would help the organization meet key goals (+)
- Opinion leaders believed that change was essential (-)
- In preparation for the project, the project team had compiled and presented data that proved the problem's severity (+)

# Results: Admissions Participation

- Private (+)
- Signed up in 3 days (+)
- Overall effective management practices (+)
- If successful, the project would help the organization meet key goals (+)